

Alaska Department of Fish and Game

Habitat Section
Southeast Region



115-32-10300-2002-3019-4005

ADDITION

Water body name:

Survey date: 4/21/2025

Quad: Skagway A-2

Species & Lifestage: COP

Upper Reach Latitude: 59.238640 **Longitude:** -135.456651

Survey crew: TE, CD

Lower Reach Latitude: 59.236442 **Longitude:** -135.459375

Findings: We surveyed this uncataloged stream from the road using a backpack electrofisher and GPS and captured juvenile coho salmon and cutthroat trout. The stream flows slowly along the roadside in a ditch. At waypoint 1425, the stream flows through a 164ft long culvert at 4.5% grade and is perched 1ft at the outlet. Coho caught upstream of the pipe indicates the pipe is passable under certain flow conditions. Upstream of the pipe, stream has a defined channel with small gravel and fine sediment substrate. (Table 1; Figures 1–3).

Recommendations: Extend Stream No. 115-32-10300-2002-3019-4005 to waypoint 1426 in the anadromous waters catalog and add rearing coho salmon to species list (Figure 4).

Nomination: Pending

Table 1.–115-32-10300-2002-3019-4005 Addition survey data.

Waypoint	Latitude	Longitude	Notes	Stream Width ft	Stream Substrate	Habitat Features	Gradient %	Sample Effort	Sample Results
1425	59.238140	-135.456819	Driveway Culvert is more or less buried 41 ft long and 1.6% grade. Channel continues upstream in a ditch that runs towards warehouse. Minimal flow but potential fish habitat. Coho captured downstream of perched culvert near back of AML yard. Measured with hypsometer, 164 ft long 7.33 ft difference. Culvert perched exactly 1 ft. Perched about 1.5 ft, pouring over rocks into 1.5 ft deep plunge pool.	8-10	Fine Organic Small Gravel		1-2	EF	3 CO
1426	59.238639	-135.456651	Surveying upstream of perched culvert. Channel is incised and defined. Grade increases slightly. Stream bed is small gravel covered in fines, likely settling out due to the grade break caused by the culvert. Anadromous fish presence indicates that fish are able to pass the culvert under certain flow conditions.	6-8	Fine Organic		2-4	EF	2 CO 2 CT
1427	59.238797	-135.45646	Corrugated plastic pipe draining ponded area. 8in trout in plunge pool. Pipe set at more than 20% grade.					EF	1 CT



Figure 1.—Juvenile coho salmon caught at waypoint 1426.



Figure 2.—Perched culvert at waypoint 1425.



Figure 3.—Channel at waypoint 1427.

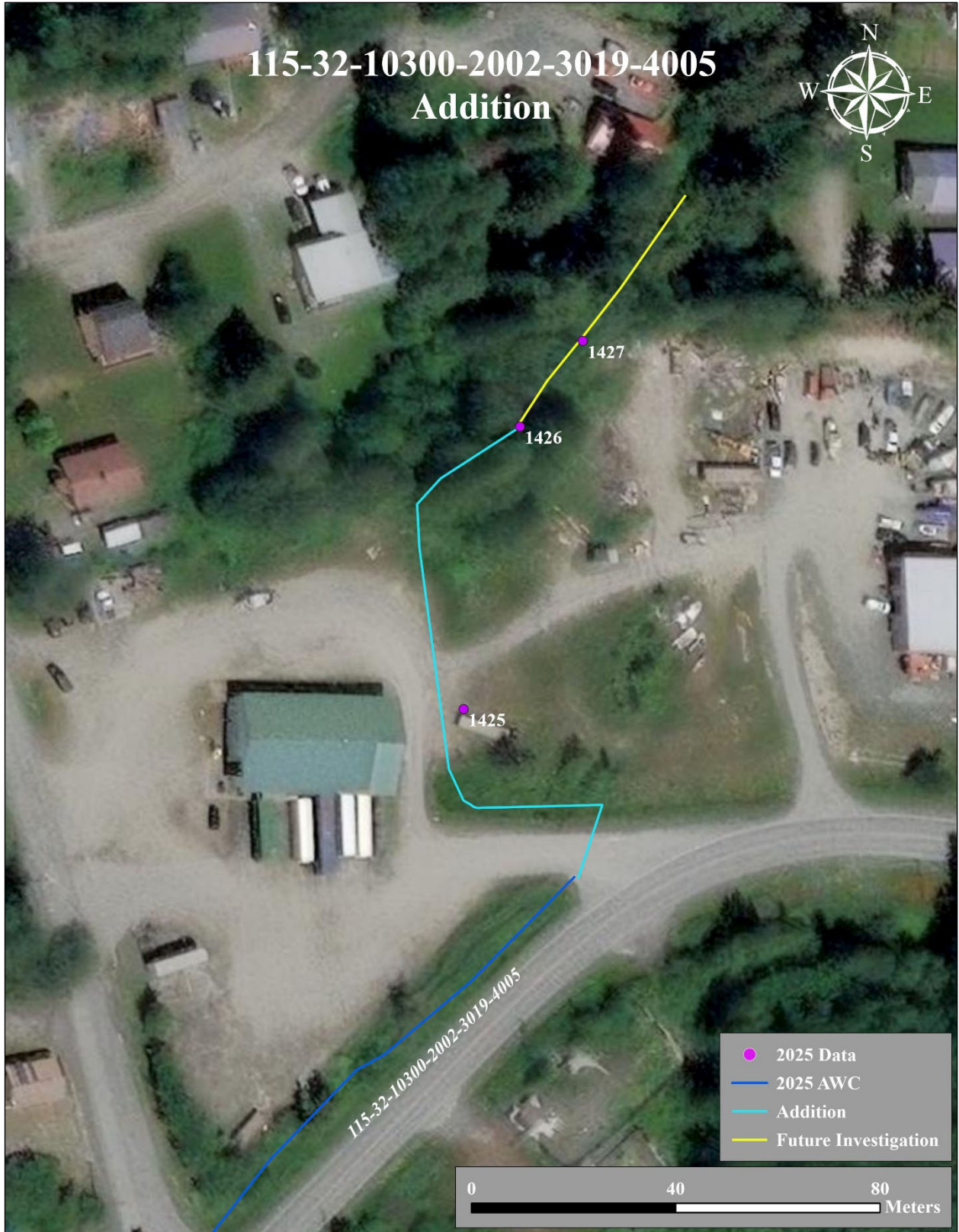


Figure 4.—115-32-10300-2002-3019-4005 Addition map.